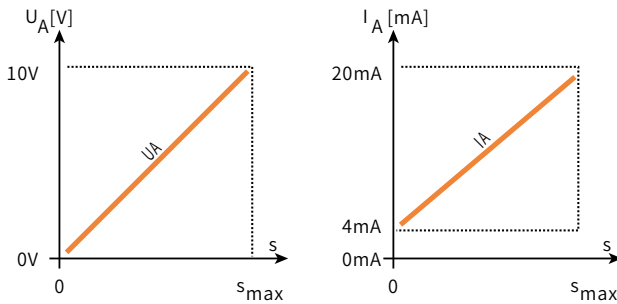


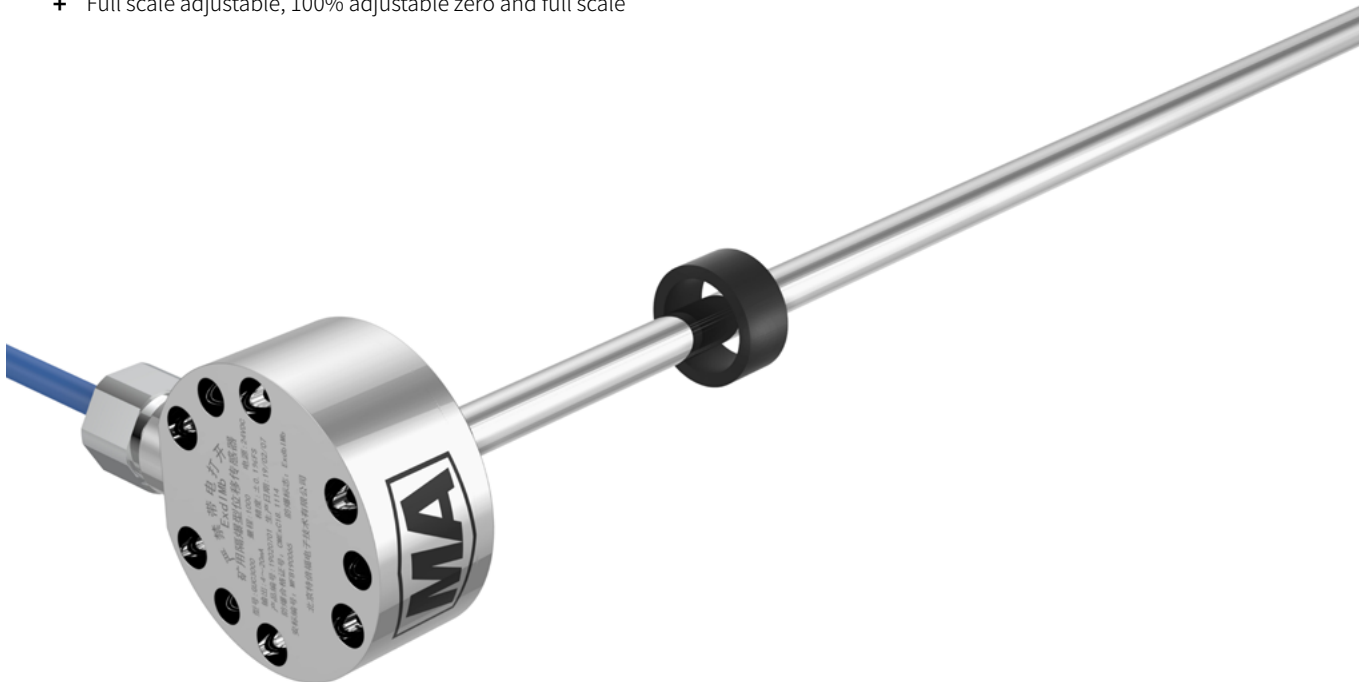


GUC3000(A) - Analog

Data Sheet



- + Compact structure: flat structure design, flange mounting, suitable for use inside U-shaped and other space-limited hydraulic cylinder
- + Durust: fully enclosed design with maximum IP68 protection
- + Easy to use, standard signal output, maintenance-free
- + Non-contact measurement, no attrition
- + Full scale adjustable, 100% adjustable zero and full scale



TECHNICAL PARAMETER

TECHNOLOGY PERCEIVES THE FUTURE

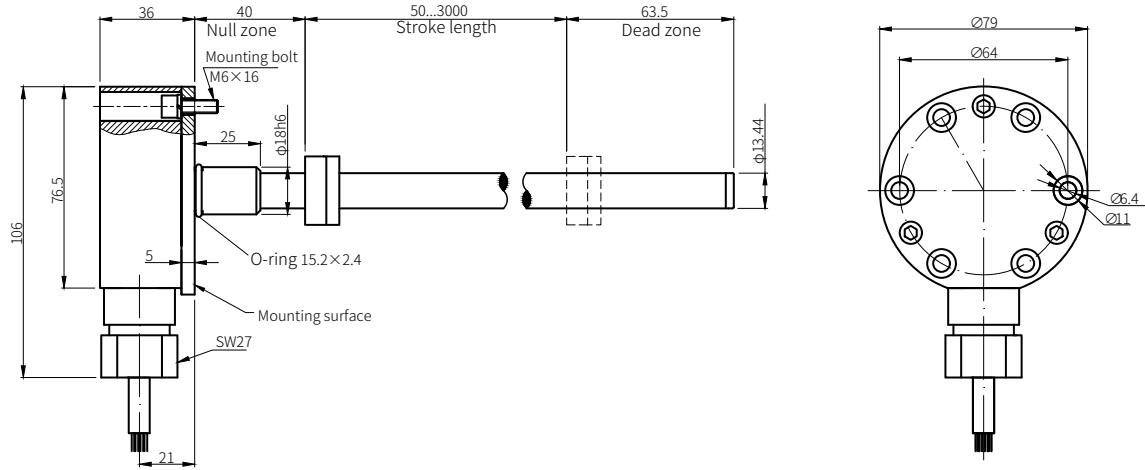
Input	Measured data	Position	
	Measurement range	50...3000mm	
Output	Voltage	0...10VDC	
	Current	4...20mA	
Resolution	Position resolution	16 bit D/A (highest 50 μ m)	
	None-Linearity	< $\pm 0.05\%$ F.S.	
	Repeatability	< $\pm 0.05\%$ F.S.	
	Update time	Stroke length	$\leq 1200\text{mm}$ $\leq 2400\text{mm}$ $\leq 3000\text{mm}$
		Update time	0.5ms 1ms 1.5ms
	Frequency response	0.2...5ms	
Temperature coefficient	<30ppm/ $^{\circ}$ C		
Mounting	Mounting position	Any	
	Mounting	Tight sealed flange $\Phi 18\text{h}6$, 6 screw mounting holes	
Design/ Material	Electronics housing	Stainless steel 304	
	Measuring rod	Stainless steel 304/316L	
	Magnet ring	$\phi 33\text{...}\phi 16$	
	Operating pressure ratings	35MPa (continuous) ,70MPa (peak)	
Electrical connection	Wiring connection	Straight out cable	
	Operating voltage	+24VDC(-15/+20%)	
	Polarity protection	Up to -36VDC	
	Overvoltage protection	Up to +36VDC	
	Power consumption	< 80mA	
	Dielectric strength	1000 VDC (DC ground to machine ground)	
Operating conditions	Magnet velocity	Any	
	Operating temperature	-40...85 $^{\circ}$ C , -30...80 $^{\circ}$ C (Special customization)	
	Humidity	90 % relative humidity, no condensation	
	Ingress protection	IP68	
	Explosion-proof type	Mine flameproof type	
	Explosion-proof mark	Ex db I Mb	
	Shock	100 g (single shock) IEC standard 60068-2-27	
	Vibration	30g/50Hz,15g/10...2000 Hz, IEC standard 60068-2-6 (resonant frequencies excluded)	
	EMC	Electromagnetic emission	according to EN 61000-6-3
		Electromagnetic immunity	according to EN 61000-6-2

ITEM

CATEGORY

PARAMETER

Straight out cable



Color	● Red	○ White	● Green	● Blue
Function	+24VDC(-15/+20%)	GND	Signal output	SGND

GUC3000(A)-		M			Output (Output Code)
Mounting	Stroke length	Connection type			
C Rod ϕ 13.44mm	0050~2500mm (5mm increments)	RX__ Straight out __m coal safety cable			
R Rod ϕ 13.44mm(with M4x6 thread at tail end)		(If the cable length is less than two digits, add zeros in front.)			

Analog Output Code	[1][2][3]
	[1][2] Current/Voltage
	[3] Magnet
	A0 4...20mA (forward)
	V0 0...10V (forward)
	1 one magnet

Note: forward, data grows larger when the magnet is distant from the electronics housing;
reverse, data grows larger when the magnet approaches the electronics housing.

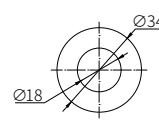
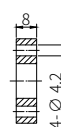
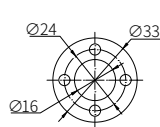
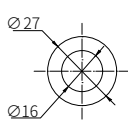
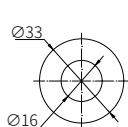
Model selection	Model: GUC3000(A)-C-0100M-RX05-A01
	Explanation: GUC3000(A) series magnetostrictive displacement sensor, measuring rod diameter 13.44mm, range 100mm, straight out 5m coal safety cable, 4 to 20mA current output (forward), single magnetic ring.

***This product is a mining product, the model must be GUC3000 (A), please refer to the selection code when ordering.**

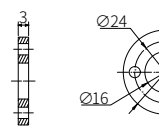
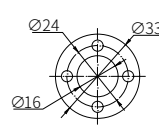
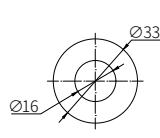
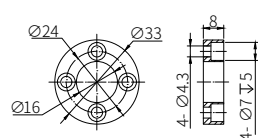
■ Please contact us for more customized products.

PARTS SELECTION

TECHNOLOGY PERCEIVES THE FUTURE



Name	Ring magnet	Ring magnet	Ring magnet	Ring magnet
Operating temperature	-40~125°C			
Order code	12-1028	12-1029	12-1033	12-1053



Name	Ring magnet	Non-permeable gasket	Non-permeable gasket	Non-permeable gasket
Operating temperature	-40~125°C			
Order code	12-1035	12-1043	12-1047	12-1034

Building 6, Dazu Enterprise Bay,
8th yard of Liangshuihe 2nd street, BDA P.R.China

Tel: +86 10-67948976 67948916
Fax: +86 10-67948979