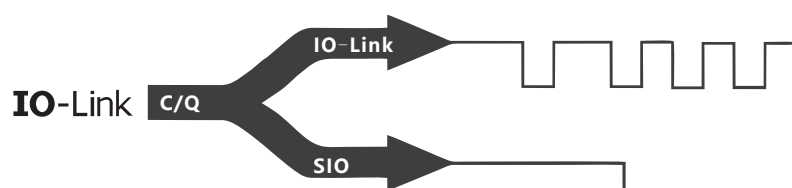




GR-IO-Link

GR - External Aluminum Housing -type sensor



- + Easy to install: push-pull rod type, quick installation
- + Linear measurement, absolute value output without zeroing
- + Easy to use, standard singal output, maintenance -free
- + Widely used: printing, papermaking, rubber and plastic machinery and other fields
- + IO-Link signal output



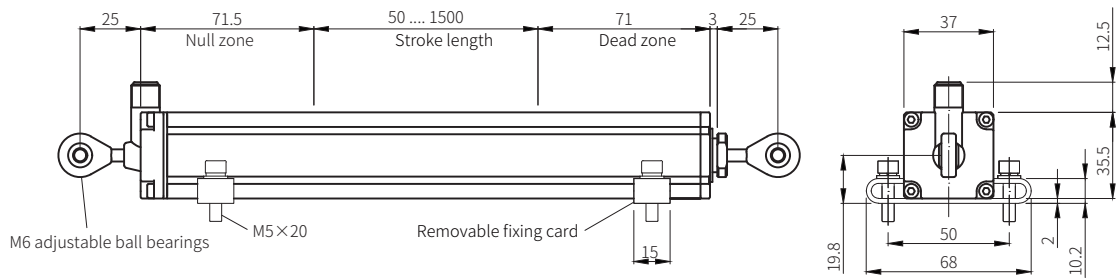
Document Number:
GR-L(V1.1)-EN

TECHNICAL PARAMETER

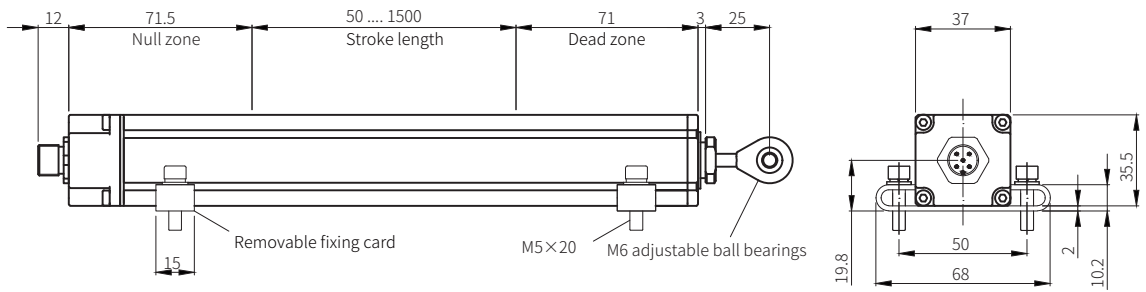
Input									
Measured data	Position/Speed								
Measurement range	50mm...1500mm								
Output									
Interface	IO-Link 1.1								
Data format	32-bit signed								
Process data	0 Byte								
Master – Device									
Transmission rate	<table border="1"> <thead> <tr> <th>Rate(bit/s)</th> <th>4800</th> <th>38400</th> <th>230400</th> </tr> </thead> <tbody> <tr> <td>Port</td> <td>COM1</td> <td>COM2</td> <td>COM3*</td> </tr> </tbody> </table>	Rate(bit/s)	4800	38400	230400	Port	COM1	COM2	COM3*
Rate(bit/s)	4800	38400	230400						
Port	COM1	COM2	COM3*						
Resolution									
Position resolution	1/2/5*/10/20/50/100µm								
None-Linearity	< ±0.02%F.S. (min. ±50µm)								
Repeatability	< ±0.005%F.S. (min. ±10µm)								
Update time	<table border="1"> <thead> <tr> <th>Stroke length</th> <th>≤ 1200mm</th> <th>≤ 1500mm</th> </tr> </thead> <tbody> <tr> <td>Update time</td> <td>0.5ms</td> <td>1ms</td> </tr> </tbody> </table>	Stroke length	≤ 1200mm	≤ 1500mm	Update time	0.5ms	1ms		
Stroke length	≤ 1200mm	≤ 1500mm							
Update time	0.5ms	1ms							
Temperature coefficient	< 30ppm/°C								
Mounting									
Mounting position	Any								
Installation type	M6 ball bearings, Removable fixing card								
Design/Material									
Sensor shell	Aluminum alloy								
Push-pull rods	Aluminum alloy								
Electrical connection									
Wiring connection	5 pin M12 connector								
Operating voltage	+24VDC (-15/+20%)								
Polarity protection	Up to -36VDC								
Overvoltage protection	Up to +36VDC								
Power consumption	< 40mA (varies with range size)								
Insulation strength	500 VDC (DC ground to machine ground)								
Operating conditions									
Magnet movement speed	≤ 5m/s								
Operating temperature	-40...85°C								
Humidity	90 % relative humidity, no condensation								
Ingress protection	IP65								
Shock	100 g (single shock) IEC standard 60068-2-27								
Vibration	5g/10...2000 Hz, IEC standard 60068-2-6 (resonant frequencies excluded)								
EMC	Electromagnetic emission according to EN 61000-6-3 Electromagnetic immunity according to EN 61000-6-2								

TECHNICAL DRAWING

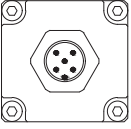
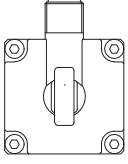

Radial outlet, 5 pin M12 connector



Axial outlet, 5 pin M12 connector



Wiring

5 pin M12 connector		PIN	Function
			
		1	+24VDC(-15/+20%)
		2	NC
		3	GND
		4	C/Q(communication line)
		5	NC

ORDER CODE

GR - - - - M- - - - L - - - -

Outgoing direction	Stroke length	Connection type		Output (Output Code)
R Radial	0050...1500mm (5mm increments)	D512	5 pin M12 connector	
A Axial				

IO-Link Output Code	L [1][2][3]-[4]			
L Interface	[1] Resolution	[2] Output	[3] IO-Link version	[4] Magnet number
L IO-Link	1 5µm*	1 Position	1 V1.1, COM 1	1 one magnet *
	2 2µm	2 Position and speed*	2 V1.1, COM 2	
	3 10µm		3 V1.1, COM 3*	
	4 50µm			
	5 100µm			
	7 20µm			
	8 1µm			

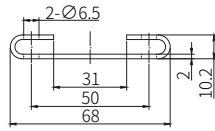
Note: "*" as default

Model selection	Model: GR-R-0600M-D512-L123-1
	Explanation: GR type , Radial outlet, stroke length 600mm, 5 pin M12 connector, IO-Link output ,resolution 5µm ,position and speed measurement, V1.1,COM3,single magnet.

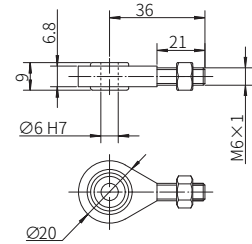


ACCESSORIES

IO-Link





Width:15mm



Name	Removable fixing card	M6 fish eyeball head bearing
Order code	11-1009	11-1007



Connector	5 pin M12 female connector	5 pin M12 female connector (90 degree angle)
Name	Integral cable	Integral cable
Cable	5 wire 0.25mm ² shielded cable	5 wire 0.25mm ² shielded cable
Color/Diameter	Orange/ Ø 6	Orange/ Ø 6
Plug surface	 <ul style="list-style-type: none"> 1-Brown 2-Green 3-White 4-Gray 5-Yellow 	 <ul style="list-style-type: none"> 1-Brown 2-Green 3-White 4-Gray 5-Yellow
Length	5...30M	5/10/15/20/30M
Order code	16-1035	16-1040

Building 6, Dazu Enterprise Bay,
8th yard of Liangshuihe 2nd street, BDA Beijing P.R.China

Tel: +86 10-67948976 67948916
Fax: +86 10-67948979
Technical support: +86 (0)13370126657

Beijing Tebeifu Electronic Technology Co., Ltd.

■ **For more customizable products,
please contact us.**